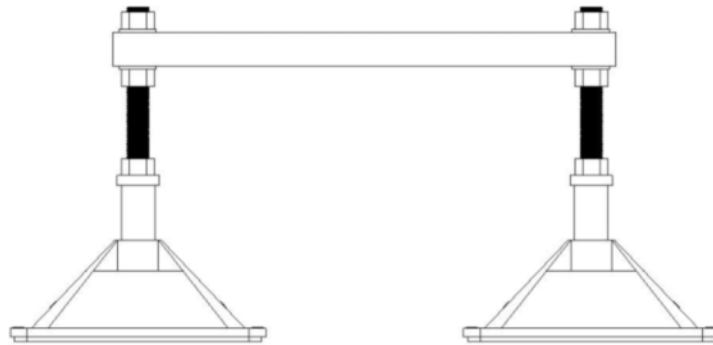


StrutFoot

Beam System



The StrutFoot Beam is an adjustable heavy duty support system which is typically used with heavy Air Handling Units (AHU's), chillers or when existing steel beams need to be picked up on the roof.

Part No.	Feet Size (mm)	Beam Size (mm)	Product Weight (kg)	Frame S.W.L (kg)
SF7500	305	600	9.5	350
SF7010	305	600	12.4	350

StrutFoot Beam Includes

Product	Quantity
Leg Assembly	x 2
Beam	x 1
Brackets	x 2

